

## PORTRAITS

Value is important when creating a portrait. It refers to the range of light and dark areas in a photograph.

The lightest and darkest areas of a photograph attract our attention and help to move our eyes through the image.

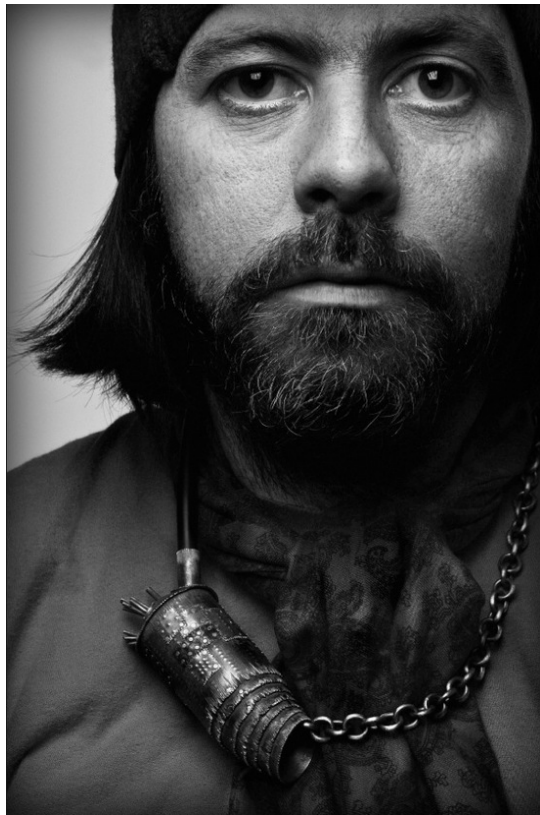
As a portrait photographer, keep in mind the location of the light source in an image so you can take advantage of the light values, the highlights and the shadows of your subject.



Values in portrait photography change as textures and shapes become more or less visible. Subtle changes in value can provide a sense of depth in an image, creating the illusion that the subject comes forward or recedes into the background.









Values can also bring emotional content to a photograph. Lots of shadowed areas suggest a darker, more melancholy mood...

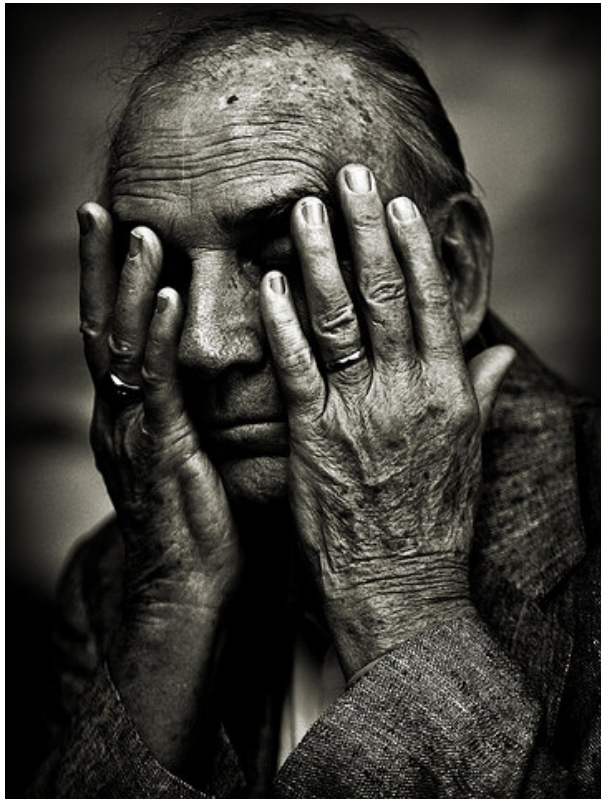














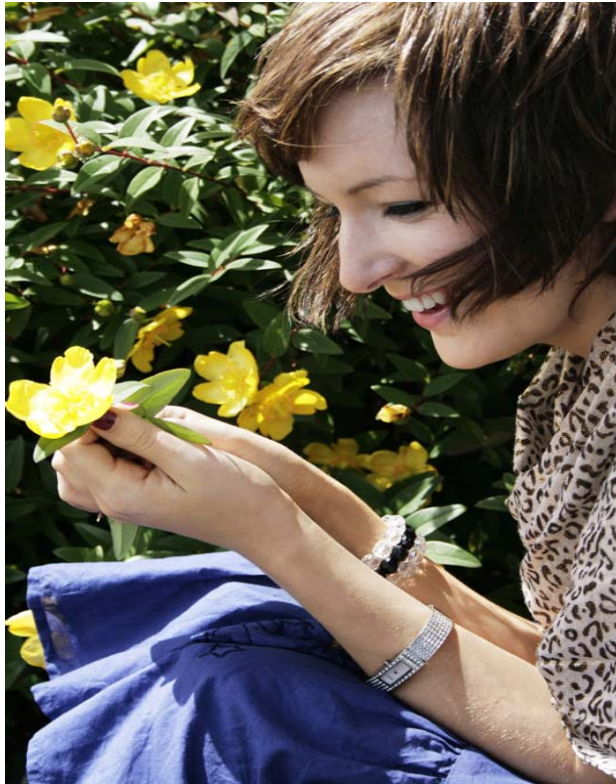


While brightly lit scenes convey an upbeat, positive feeling.



Kelley Ryden  
PHOTOGRAPHY









TRY:

creating some head-and-shoulders portraits putting your subject at different areas of the "rule of thirds" grid.

try asymmetrical balance (off-center) then move the subject in the middle (symmetrical)



asymmetrical balance



symmetrical balance

## SHAPE AND FORM

In portraits, shape is critical when composing an image. By presenting your subject as the dominant shape, you can emphasize him or her.

Place the person in the center of the frame.  
Minimize the background.  
Create an immediate sense of importance for the subject.

When photographing groups of people, try and arrange them in a geometric shape, like a triangle (it's one of the most naturally stable shapes= balance and solidity).





A successful portrait photographer learns to become comfortable in front of people and interact with them. Talk to your subjects and make them feel at home and at ease. Ask them questions about themselves and show a sincere interest in what is important to them by maintaining eye contact when speaking to them.



REMEMBER: cloudy days are great days to take a portrait outside.  
Make sure the sun is NOT in back of your subject  
watch out for harsh shadows

At Home Assignment:

10-12 photographs of people

try close-ups, emotions, assymetrical and symmetrical balance etc...

## HDR Photography!





















